

I take an increasing amount of medications such as antibiotics or hormonal contraception.

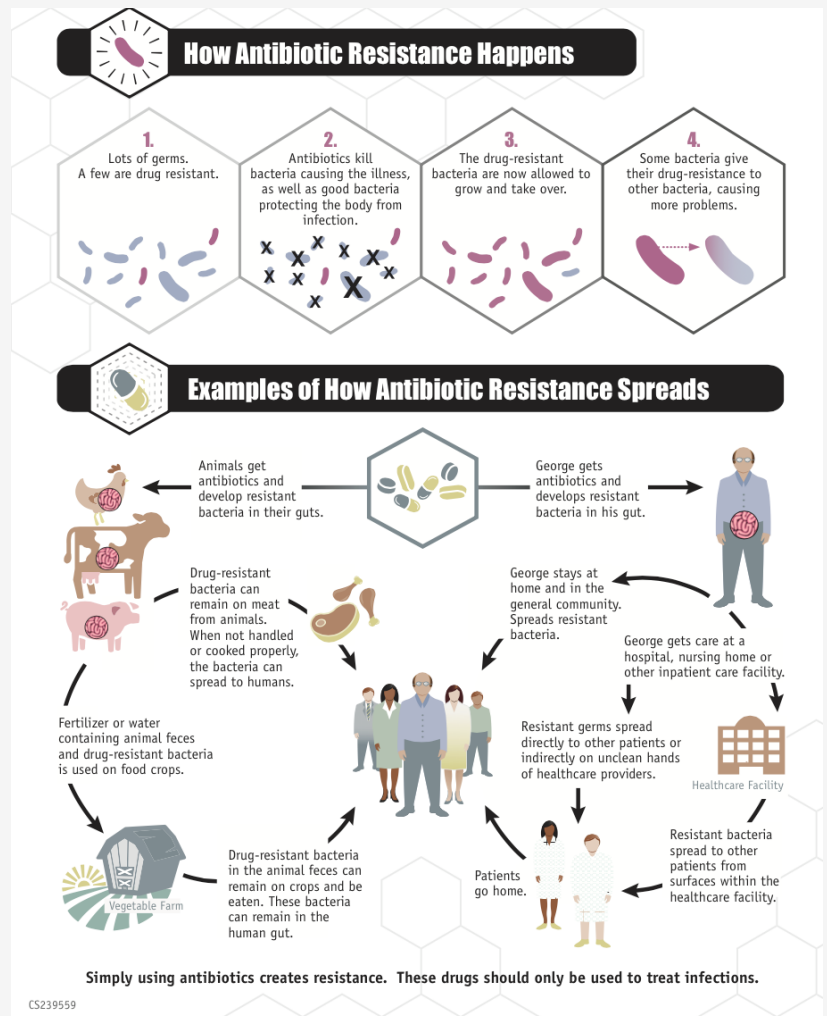
P.O.V STATEMENT

STAKEHOLDER

- Patient
- Physician
- Pharma Industry
- Wastewater treatment industry
- Politics

INDUSTRY SECTOR

- Wastewater treatment industry



Centers for Disease Control and Prevention [Public domain], via Wikimedia Commons <https://commons.wikimedia.org/wiki/File:CDCinfographicANTIBIORESISTANCE.png>

SIGNIFICANCE OF ISSUE

Those medicaments are excreted in part through urine and will end up in the wastewater. Our wastewater treatments don't filter out those types of particles, and through the water cycle, small doses of these medicaments get reintroduced to humans. Because of this, a large scale antibiotic resistance is build up. Antibiotic prescriptions have increased by 65% over the last 15 years, as has the wrong consumption of antibiotics, which also furthers the resistance.

SOURCES

- <https://www.nhs.uk/news/medication/global-antibiotic-use-has-increased-sparking-fears-worldwide-resistance/>
- <https://www.ncbi.nlm.nih.gov/pmc/articles/PMC4378521/>